



The Global Leadership Profile (GLP) Vertical Leadership Development and Action Inquiry Program



November 5, 10, 12, 17, 24, 2026

Offered over five interactive workshop sessions, 4 optional inquiry labs and solo work:
November 5, 10, 12, 17, 24, 2026 (08:00 PT/11:00 ET/16:00 UK start) 2.5 hours

Optional Inquiry labs: Dates TBC (1 hour)

Please note:

- Attending the MyWorldView® Program is a prerequisite for joining this program
- An additional one-to-one supervision module is available for those wishing to certify to debrief the GLP

The Global Leadership Profile (GLP) Vertical Leadership Development and Action Inquiry Program



November 5, 10, 12, 17, 24, 2026

This program is ideal for coaches, leadership development specialists, researchers and leaders, and is a deep dive into vertical leadership development, theory and practice. It is also the penultimate step for certification to debrief the GLP with others.



Join this program so that you can:

- **Grow your vertical development expertise** by building on the foundations of the MyWorldView® program and deepening your knowledge of Herdman-Barker and Torbert's seven developmental worldviews (or "action-logics").
- **Know the value of the GLP report** and unique commentary in helping explore patterns of thought and experiments for growth.
- **Experience the power of a coach debrief** and imagine how you could do this with your own colleagues and clients.
- **Observe action-logics** in sentence stem responses and turn what you are noticing into coaching inquiries.
- **Understand how the assessment works** and gain insight into when to use it instead of MyWorldView®.
- **Deepen your connection with our vibrant Authorized Practitioner community** and gain access to support, new ideas, and continue your learning journey with the latest resources and programs. For more information on Authorized Practitioner benefits **CLICK HERE**.
- **Gain ICF credits.**

On successful completion of the additional GLP certification module, you can:

- Purchase the GLP and be certified to debrief it with clients.
- Work confidently with sentence stem responses and the GLP report to help colleagues/clients gain insight into their own patterns of thought and take action for growth.
- Enjoy discounts, as an independent coach or consultant, on the GLP along with other GLA products.
- Get a GLP certification logo to use in your email signature, website and promotional materials.
- Know how to practically manage using the GLP with your clients/colleagues.

The Global Leadership Profile (GLP) Vertical Leadership Development and Action Inquiry Program



November 5, 10, 12, 17, 24, 2026

1 GLP Profile

The GLP goes into more depth than MyWorldView®. You'll receive:

- A GLP report with unique commentary
- A copy of your sentence stem responses with a scoresheet
- One-to-one debrief with one of our senior associates

You won't need to take the assessment again, because we will use your responses from MyWorldView®.

2 Individual Learning

Through our self-paced solo learning, you'll access videos, articles and key information about the GLP, action inquiry and vertical development. You'll be invited to describe your personal experience of each Action Logic.

3 Workshops

Five x 2.5 hour highly interactive webinars. In these you will:

- a) explore the Action Logics (worldviews) in greater depth
- b) work with Action Logic patterns in sentence stem responses
- c) learn more about action inquiry.

4 Inquiry Labs

Optional 4 x 1 hour groups that participants join for the duration of the program. Facilitated by a member of our team, you'll be helped to explore questions in depth and adopt an action inquiry approach.

Certification Module

Additional for those seeking certification to debrief the GLP with clients. The GLP requires a coach debrief, which needs skillful and ethical application. You will be supported to do your first 2 client GLP debriefs by one of our certifying supervisors. In three intensive one-to-one sessions, they will help you prepare for your debriefs, and reflect and learn from them. You will need to buy 2 GLPs to debrief (most people find a friendly client to recharge to). You can always purchase more supervision sessions; occasionally more support is necessary before a person is ready for certification.

The Global Leadership Profile (GLP) Vertical Leadership Development and Action Inquiry Program



November 5, 10, 12, 17, 24, 2026

About MyWorldView® and the GLP

MyWorldView® and the GLP can both be used in coaching, team facilitation and leadership development programs*. The headline difference is that the GLP is more in-depth. They use the same 30 sentence stems for the assessment, but thereafter there are some difference to how the tools might be used. MyWorldView® is the scale option, meaning it's cheaper in price, and technology enables large volumes with a fast turnaround. It does the heavy lifting on explaining the theory in a very accessible way through its online debrief and selfpaced learning. It reveals how a person profiles, but it doesn't unlock nuances at a sentence stem level.

**They can also be used in recruitment; note that if this is your intention, please contact us, as there are some additional principles and guidelines to enable effective use.*

The GLP requires a coach to debrief the overall experience, diving into the detail of the user's responses to the assessment. It comes with an extensive report,

explaining how the person has profiled, and includes a commentary unique to the individual. This offers coaches a rich resource to draw from, that can lead to many powerful coaching inquiries and explorations.

Over 50 years of research and real-world engagement points to the GLP and MyWorldView® instruments and GLA's Action Inquiry approach being world leading; impacting both individual and organizational transformations. Aside from the sentence completions, the GLP asks participants to both complete a self-estimate and gather feedback from colleagues. This multiperspective approach to assessment models the richness of inquiring into both one's own and others' viewpoints.

This program, along with the certification module, will train you to work with the sentence stem completions in coaching. Scoring and commentary writing is always provided by our GLA expert team.

Practical Details

5 x 2.5 hour highly interactive virtual workshops on November 5, 10, 12, 17, 24, 2026.

Optional 4 x 1 hour inquiry lab groups - Dates TBC

(08:00 PT/ 11:00 ET/ 16:00 UK start)

Requirements

Attending the MyWorldView® Program is a prerequisite for joining this program. Participants are required to: (1) attend & participate in all of the main workshop sessions (2) complete solo work and light homework and (3) have a GLP debrief. Additionally, those wishing to certify to debrief the GLP with clients will be required to complete an extra one-to-one certification module (see page 3 for details).

Note that workshop sessions are not recorded. If you are unable to attend a session, you may be required to book a one-to-one catch-up with a member of our team, which will be chargeable at a reduced rate. Contact info@gla.global for more information.

Cost:

US\$1,499

Independent Coaches

US\$1,999

Corporates

Optional GLP Certification

US\$780 independent/ US\$1,200 corporate if you wish to do the certification module to become an authorized GLP debriefer.

Participants seeking to certify after the program are also asked to purchase 2 GLPs at \$500 each (**independent coach price**) (RRP \$600) to debrief as part of their GLP accreditation - this is typically recharged to their clients or organizations.

Please note, VAT is chargeable to UK residents only.

For further inquiries, please email info@gla.global

To book your place, please click [HERE](#)

The Global Leadership Profile (GLP) Vertical Leadership Development and Action Inquiry Program



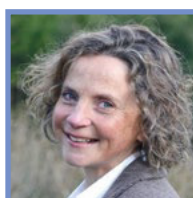
November 5, 10, 12, 17, 24, 2026

Faculty will include a selection from the following:



Elaine Herdman-Barker

Co-founder and Partner for Mutual Growth and the search for the Common Good of Global Leadership Associates, Elaine is the co-creator of the GLP, leading authority on assessing and supporting change in leadership action-logics.



Kirsty Leishman

A highly respected coach and facilitator, Kirsty works alongside leaders and teams from global, FTSE organizations; public services and the voluntary sector – across the UK and internationally.



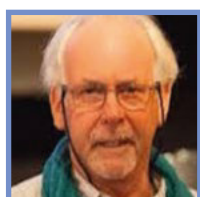
Richard Izard

Co-founder and CEO of Global Leadership Associates, Richard is a leadership development consultant who specializes in helping individuals, teams and organizations make lasting change in how they think and behave.



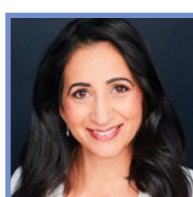
Bill Pullen MCC

Bill was formerly Director of the Institute for Transformational Leadership at Georgetown University. He is focused on helping senior leaders by expanding the complexity of their thinking, and aligning their mental models and behavior with organizational strategy.



Nick Owen

Nick Owen is a consultant with an international reputation whose work has been acclaimed across a variety of contexts: corporate organizations, the professions, the arts and education.



Aman Gohal, PhD, PCC

Aman works with Founders, CEOs and VP leaders across industries and primarily supports leaders in start-ups, Tech and Health-Care. Compassion and wisdom are cornerstones to her work with clients.



Danny Morris

International Coaching Lead, Danny brings clients new ideas and fresh perspectives that can be immediately applied to business and leadership challenges. He helps leaders navigate relational complexity and getting the best out of people.



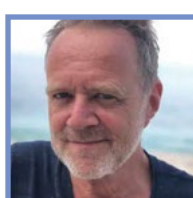
Eric Svaren

Eric is a coach to leaders in business, tech, health care, research, higher education, government, NGOs (nonprofits), and associations—as well as leaders in transition.



Roxane Loiseaux

As a coach, Roxanne's presence invites deep connection, curiosity and lightness. Her focus is on leadership development individually and in teams to foster a collaborative culture.



Romeck van Zeijl

Romeck is an experienced designer and facilitator of leadership and organizational development curricula focused on Vertical Development. He has been working as an executive coach and organisational development consultant for over a decade.

The Global Leadership Profile (GLP) Vertical Leadership Development and Action Inquiry Program



November 5, 10, 12, 17, 24, 2026

GLA Awarded ICF (Continuing Coach Education) Accreditation

We are thrilled to announce our Action Inquiry (AI) & GLP Workshops and our Advanced Practitioner Program have been accredited by the International Coach Federation (ICF). All delegates who attend our Workshops will now earn credits towards the renewal of their ICF credential.



GLA Workshops – Client Testimonials

"I'm deeply invested in using the GLP to make a difference with my clients, and rippling into their lives, careers and organizations. I can already see the results of this from my first clients. New thinking, new possibilities, new space and scope for who they are becoming and what that means for them and their worlds. I'm just so looking forward to continuing the journey and offering this transformative and deeply developmental opportunity to more clients and wider networks."

Joanne Ostler, Leadership and Development Coach, Spring Leadership

"The Action Inquiry & Global Leadership Profile Virtual Program was excellently organized, with a strong energy and engagement flowing through the group for the whole week. The collaborative way of working enabled deeper discovery of the stages of adult developmental maturity, and I gained an intimacy of realization about each stage, along with the capability to administer and debrief the GLP instrument with clients."

Paul O'Donovan Rossa, Executive Coach

"It is clear from taking the GLP Certification Workshop how Elaine and her team have been listening and taking action at the leading edge of human development for several decades now. The way they have translated their work into a meaningful, disciplined framework for leadership development and organizational transformation is staggering in its implications, elegant in its simplicity, and humbling in what it represents: a beacon of light in the midst of a complex world filled with shadows. Prosaics aside, the GLP also has a "role up your sleeves and get boots on the ground" kind of pragmatism about it."

Christopher Chang-Duffet, Executive Director, Humaxis, Inc.

"I attended both the recent London accreditation Workshop and also the Advanced Practitioner Program, which invites you to take a deeper dive and answers the 'what next' question, developing a wider community of practice and inquiry. The space was creative and inviting in anticipation for learning, exploration and living the theory. I was joined by a group of wonderful, like-minded people who were happy to share their rich experiences, both professionally and personally. Elaine in particular is a wonderful facilitator – She manages to create a perfect balance between academic rigour and skilful use of art, metaphor and story-telling for making complex concepts not only accessible, but also much easier to integrate by the audience."

Alis Anagnostakis, Consultant and Executive Coach

"Not only do you walk out with an accreditation but an invitation into a personal development journey. The team at GLA do a beautiful job of balancing building your competence and confidence in a tool at the same time as giving you a felt experience of your own range of action logics and introduce you to practical ways of helping clients get to know and access their own range. It has given me a new perspective on designing leadership development programs and coaching."

Attiyya Malik, Principal Consultant/Head of Adaptive Leadership