



MyWorldView® (MWV) Authorized Practitioner Certification Program



Offered over four interactive workshop sessions and two learning cafes.

Main sessions running on 9, 11, 16 & 18 July at 11am ET / 4pm UK (2.5hr sessions)

Learning Cafes running on 12 & 19 July at 11am ET / 4pm UK (1hr)

Participants get to take MWV before the program and enjoy the full digital learning journey.

At the end participants receive entry to the GLA Authorized Practitioner Community and a free MWV profile.

MyWorldView® Authorized Practitioner Certification Program



Sessions running on 9, 11, 16, 18 July | Learning Cafes running 12 & 19 July

This gateway program introduces coaches, business leaders, consultants, leadership development specialists, researchers and practitioners to:

1. Adult development (vertical) theory and practice. An understanding of which is needed to use the game changing MyWorldView® psychometric.
2. Deliver all you need to learn about using MyWorldView® with clients.

By the end of the program participants will be welcomed into GLA's vibrant Authorized Practitioner community offering a host of benefits including exclusive discounts on MyWorldView® (50%), other discounted GLA products and ongoing advanced material to help you work with MyWorldView®.

There are no entry requirements for attending this program.

Participants will experience MyWorldView® for themselves and also receive a complimentary MyWorldView® profile to use with a client.



Main Sessions

running on
9, 11, 16 & 18 July

at 11am ET / 4pm UK (2.5hr sessions)



Learning Cafes

running on
12 & 19 July

at 11am ET / 4pm UK (1hr)

MWV Authorized Practitioner Certification

Take MyWorldView® and experience the digital learning journey as well as our Transformations Cards and other individual learning pre-work

Week 1

Focus on theory

Tuesday	Thursday	Friday
Workshop 1	Workshop 2	Learning cafe

Week 2

Focus on practice

Tuesday	Thursday	Friday
Workshop 3	Workshop 4	Learning cafe

Certify and join GLA's Authorized Practitioner Community

Receive complimentary MWV profile

MyWorldView® Authorized Practitioner Certification Program



Sessions running on 9, 11, 16, 18 July | Learning Cafes running 12 & 19 July

Authorized Practitioner Community

The route to becoming an Authorized Practitioner is either through this certification workshop or through attending a GLP program. Those qualified in MAP or LDF are also eligible. Being an Authorized Practitioner has many benefits including:

- Access to a wide range of resources for coaching, team coaching, leadership development programs, and organizational application
- Marketing resources to help you sell MyWorldView® to your clients
- Regular free community events including Q&A sessions
- Discount on professional development programs offered by the community e.g. Working with the shadow side of the seven worldviews
- Regular news updates sharing developments in the field
- You will be able to manage your own MyWorldView® cohorts via access to the MyWorldView® platform and practitioner dashboard

	Retail Price US\$	Authorized Practitioner Price US\$	Discount
MWV Profile	400	200	50%
Transformation Cards – single box*	400	270	33%
Transformations cards – Facilitators Pack – 6 boxes*	1600	800	50%
Transformations Cards Digital Version	20	10	50%

Authorized Practitioners who are coaches/consultants are able to purchase MyWorldView® profiles offering an accurate, reliable and fully validated vertical measure and life-affirming digital debrief at half the recommended retail price – **US\$200.**



MyWorldView® Authorized Practitioner Certification Program



Sessions running on 9, 11, 16, 18 July | Learning Cafes running 12 & 19 July

Our Workshop Experience

GLA is the craft master of not just learning about, but experiencing vertical development. Our approach offers a unique way of being and working with people. In this program you will benefit from conversations with other participants such as HR specialists, Leadership & Development experts, coaches and academics. Take advantage of GLA's decades of experience in offering vertical leadership development programs.

Together you will learn practical ways to:

- Integrate Vertical Development – How different worldviews guide action and influence results
- Explore how an understanding of worldviews can help identify self-limiting habits that are impeding personal and group effectiveness and wellbeing
- Apply your learning with your clients or in your organization to shift leadership and cultural mind sets
- Support leaders to lead from the inside out

What is MyWorldView®?

MyWorldView® is the new generation in leadership development and the world's first validated and reliable AI scored, scalable vertical measure designed specifically for leaders.

Based on over 50 years of research and action, MyWorldView® is unmatched in its reliability and validity.

It helps you:

- Explore your own estimate of how you see the world
- Discover your current profile through tailored animations and easy-to-understand content
- Tease out your thinking on the crucial leadership dimensions: time, power and change

- Apply learning through practical experiments – and take real action
- Consider the worldview culture of your organization

Set on a dynamic and accessible virtual platform, MyWorldView® supports self-paced learning, taking you on an engaging, life-affirming journey of leadership, reflection and learning where the mystery of adult development unfolds. Its impact may be seen on many levels including personal transformation, enhanced business results and leaders contributing to the common good of society.



MyWorldView® Authorized Practitioner Certification Program



Sessions running on 9, 11, 16, 18 July | Learning Cafes running 12 & 19 July

How it Works

You start by taking the MyWorldView® profile for yourself.

1

MyWorldView® Profile

You will locate your worldview, exploring it as part of your life experience. Through self-paced digital learning you'll gain personal insights whilst beginning to plan how you might use the profile in your practice or organization.

2

Individual Learning

As well as taking the MyWorldView® profile you'll also use the digital Transformations Cards. Additionally, we'll also be offering advanced resources to support your learning journey.

3

Workshops

The heart of the program is four x 2.5 hour workshops. These take the form of highly interactive webinars. These sessions take you into adult development theory and practice and give an overview on its application in coaching & teams, leadership development programs and organizational culture. How this work can inform leading for the common good of society will be an inquiry that runs throughout conversations.

4

Learning Cafes

You will have the opportunity to join 2 x 1 hour learning cafes in smaller groups. These will give you the chance to ask questions and embed the learning from the workshops earlier in the week.



MyWorldView® Authorized Practitioner Certification Program



Sessions running on 9, 11, 16, 18 July | Learning Cafes running 12 & 19 July

Facilitation Team



Elaine Herdman-Barker

Co-founder of Global Leadership Associates, & Partner for Mutual Growth. Elaine is the co-creator of the Global Leadership Profile, leading authority on assessing and supporting change in leadership action-logics.



Richard Izard

Co-founder and CEO of Global Leadership Associates, Richard is a leadership development consultant who specializes in helping individuals, teams and organizations make lasting change in how they think and behave.



Danny Morris

GLA Partner, Danny Morris, works with our clients at individual, team and organizational culture levels. He helps leaders navigate relational complexity and getting the best out of people.

Practical Details & Cost

Offered over four interactive workshop sessions on **9, 11, 16 & 18 July** with sessions starting at 11am ET / 4pm UK and Learning Cafes running on **12 & 19 July**.

All sessions are 2.5 hrs with the cafes running at 1hr.

This workshop is brought to you by Global Leadership Associates, specialist developmental coaches, consultants & creators of the ground-breaking vertical assessment, the GLP (Global Leadership Profile) which is based on over 50 years of research and real-world experience.

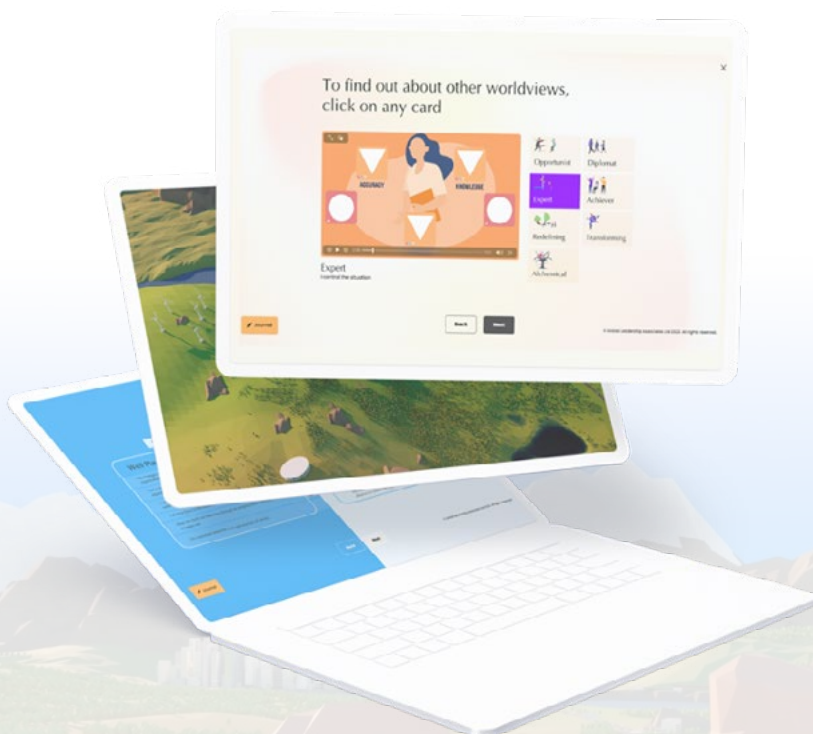
\$999

Independent Coaches

\$1499

Corporates

Click [HERE](#) to book your place online



Further optional modules are available following this MyWorldView® Practitioner Certification Program including:

- A deep dive into vertical development
- A module to certify in debriefing the GLP with your own clients
- Coaching with Vertical Development

For more information please visit <https://gla.global/workshops-and-events>